

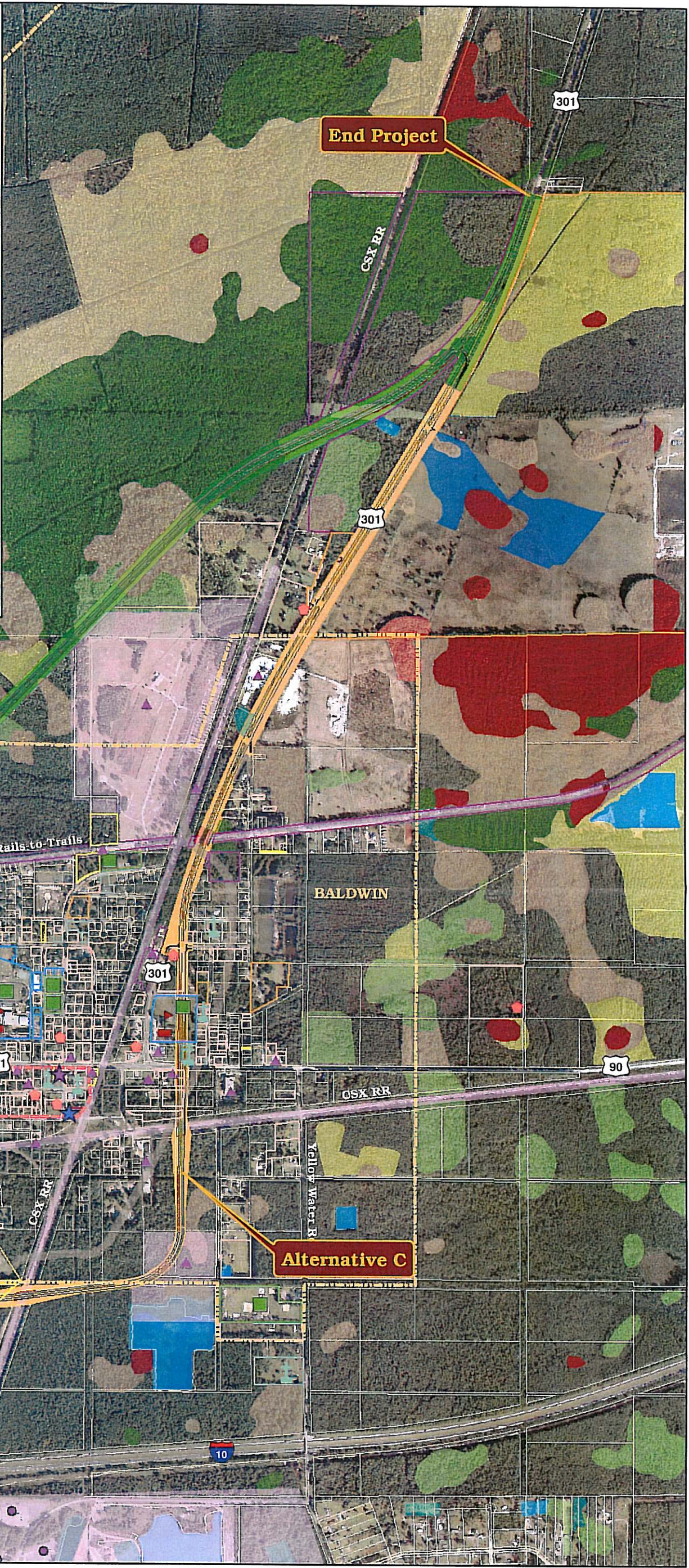
# LEGEND

## CULTURAL RESOURCES

- Historic Structure
  - Historic Bridge
  - Historic Cemetery
  - Archeological Site
  - Historic District
  - Historic Parcels
- ## PUBLIC OWNED LAND
- Federal
  - State
  - County
  - Municipal
  - Public School
  - Park/Rec
  - Utility
  - Town Hall
  - School
  - Park/Recreation
  - Post Office
  - Fire Station
- ## CHURCH PROPERTY
- Church Parcel
  - Cemetery
  - Church
- ## CONTAMINATION SITES
- Contamination Site
  - Potential Contamination Site
  - Potential Contamination Area

## WETLANDS

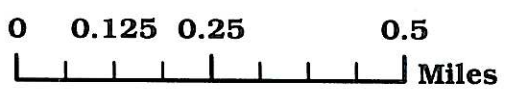
- 5100, Streams and Waterways
- 5200, Lakes
- 5300, Reservoirs
- 5340, Reservoirs < 10 acres
- 4410W, Coniferous Plantation, Wet
- 6130, Gum Swamps
- 6170, Mixed Wetland Hardwoods
- 6210, Cypress
- 6240, Cypress-Pine-Cabbage Palm
- 6250, Hydric Pine Flatwoods
- 6270, Slash Pine Swamp Forest
- 6300, Wetland Forested Mixed
- 6400, Vegetated Non-Forested Wetlands
- 6410, Freshwater Marshes
- 6430, Wet Prairies
- 6440, Emergent Aquatic Vegetation
- 6460, Treeless Hydric Savanna



P:\105060.04\GIS\Baldwin 6-1-07 Design Alternatives 1.lx

Source: Prosser Hallock, Inc.; Wetlands, ESI 2006; Cultural Resources, SEARCH 2006; Contamination, SHAW 2006; Parcels, COJ 2006; and Aerial Photography, ACA 2005.

June 1, 2007



# Design Alternatives